



SOUTHWARK CHURCHES CARE

Befriending Southwark's elderly



Southwark Churches Care **(a company limited by guarantee)**

Company Number 4236550
Registered Charity Number 1087666

Trustees' Annual Report and Accounts **Year Ended 31 March 2011**

www.southwarkchurchescare.org.uk

*Christ has no body
on earth but yours,
no hands but yours,
no feet but yours.*

*Yours are the eyes
Through which must look out
Christ's compassion on the world.*

*Yours are the feet with which
He is to go about doing good.*

*Yours are the hands with which
He is to bless people now.*

St. Teresa of Avila

Photo credits: Group photo: Members of the Wells Way social group celebrating the group's first birthday.

2nd photo: Mr. Frederick Asante-Afum – who is visited by one of our volunteers at the Peckham nursing home where he lives.

Contents

Trustees' Annual Report for the Year Ended 31 March 2011.....	4
Legal and administrative information	4
Structure, Governance and Management.....	5
Risk management.....	5
Organisational structure.....	5
Objectives and Activities	5
Chairman's Report	5
Background Information	6
Project Manager's Report 2010- 2011	7
Our Services	7
Profile of Our Users.....	8
Our Volunteers.....	10
Acknowledgements.....	13
Financial review	14
Statement of Financial Activities for the Year Ended 31 March 2011	16
Balance Sheet as at 31 March 2011	18
1 Accounting Policies.....	19
2 Resources Expended	20
3 Fixed assets	20
4 Trustees' Remuneration	20

Trustees' Annual Report for the Year Ended 31 March 2011

The Board of Trustees present their annual report for the year ended 31 March 2011. The financial statements comply with current statutory requirements, the governing document and the Statement of Recommended Practice "Accounting and Reporting by Charities" issued in March 2005 ('SORP 2005').

The Charity has taken some of the exemptions available to smaller charities within SORP 2005 and reduced some of the disclosures within the Board of Trustees' Report.

Legal and administrative information

Charity name: Southwark Churches Care

Charity Commission registered number: 1087666

Company registration number: 4236550

Registered office and operational address

Brandon Baptist Church
Redcar Street
London
SE5 0NA

Tel: 020 7252 6381

Fax: 020 7708 8341

Email: scc-office@btconnect.com

Website: www.southwarkchurchescare.org.uk

Bankers

CAF Bank Ltd
25 Kings Hill Ave
Kings Hill
West Malling
Kent
ME19 4JQ

Directors

Adrian Greenwood – Chair, appointed Chair and Director March 2011

Maggie Boase – Chair, appointed Chair September 2009, Director since September 2004, resigned January 2011.
Was also Company Secretary from April 2010 until November 2010

Rev Liz Oglesby – Vice Chair, appointed June 2008, resigned June 2011

Ros Saunders - Vice Chair, appointed September 2009 appointed Company Secretary November 2010

Norma Searles – Volunteer representative, appointed March 2007

Angela Johnston - Volunteer representative, appointed March 2007

Christopher Young – Treasurer, appointed September 2009

Emma Ouldred – Trustee, appointed September 2005, Company Secretary from Feb 2010 until resignation on April 2010

Structure, Governance and Management

Governing Document

The organisation is a charitable company limited by guarantee. The company was established in 1994 and was formally adopted as a charity in Jan 1995, with a Constitution. It became a Limited Company in June 2001, under a Memorandum of Association which established the objectives and powers of the charitable company and is governed under its Articles of Association.

Recruitment and Appointment of Management Committee

The directors of the company are also charity trustees for the purposes of charity law and under the company's Articles are known as members of the charitable company.

Trustee Induction and Training

The charitable company is well established and all trustees have a working knowledge of the charitable company's work.

Risk management

Where appropriate, systems or procedures have been established to mitigate the risks the charity faces. Internal control risks are minimised by the implementation of procedures for dual authorisation of all transactions and projects.

Due to the current size of the charitable charity, the trustees believe the risk to the charitable company to be small.

Organisational structure

The Charity is governed by the Board of Trustees and the Management Committee. The Committee currently has 5 members who meet regularly, along with Marcia Green, Project Manager and are responsible for the strategic direction and policy of the charity. The Committee is formed of members from a variety of professional backgrounds relevant to the work of the charity.

The day to day responsibility of the services lies with the Project Manager who is responsible for ensuring that the charity delivers the services specified and that key performance targets are met.

Objectives and Activities

Chairman's Report

I became Chair of Southwark Churches Care (SCC) in March 2011, so have very little direct knowledge of what happened at SCC in 2010/11. But I do know that the staff and Volunteers worked very hard in challenging circumstances to keep 'the show on the road' – and we are all indebted to them for that. We should also recognise the longstanding service of my predecessor as Chair, Maggie Boase.

I joined the Trustees of SCC because I am involved in the care of my own father in law and because I could see what important work the Volunteers do in visiting and befriending isolated older people in the community. It's an invaluable service to the users and a very good way for people to show practical love for their neighbours.

I can also see that the operating and funding environment for SCC and organisations, which provide similar services, is becoming increasingly challenging. The introduction of 'personalised budgets' and the funding reductions due to the UK's severe debt and deficit crisis mean that we are going to have to rely more on philanthropic and charitable giving and more help from our Volunteers, who provide the very heartbeat of the organisation. We will also need to explore creative opportunities for working in partnership with other local organisations.

In moving forward into 2012/3, we must not lose sight of our overall objective which is to provide a viable and sustainable befriending service to isolated, vulnerable, older people in the community, in order to promote independent living and positive mental health and thereby reduce the demand for and reliance on statutory services.

I am confident that with our Volunteers, staff and Trustees and with our partnership with Southwark Council and others we will achieve this.

Adrian Greenwood
Chair

Background Information

Tackling a real need

Southwark Churches Care was started by the Southwark Ecumenical Borough Deans back in the early 1990s in response to the then new Care in the Community legislation. They organised a 'Community Care Conference' with the Council and subsequently did some research of their own on older people in the local community and their social contact.

What emerged was a concern - a concern felt, not least, by the Council itself to the implications of the new legislation. The downside of enabling older people to remain in their homes is the possibility of social isolation. Older people might well receive packages of care from the Health and Social Services, but would they get to see anyone else during an average week? Would anyone have the time to sit down and take an interest in their lives? And what would be the knock-on effect of such isolation for their mental and emotional wellbeing?

The churches' response

The Borough Deans had a second concern. People isolated in their homes could very easily be overlooked by churches, but that didn't make them any less important. To use church congregation members as befrienders, Christian volunteers would need to be clear about boundaries, but the opportunity for caring where care is most needed was there. So began the one-to-one befriending scheme. Southwark Churches Care puts Christians and people from the wider community in touch with isolated older people in their neighbourhoods. At year-end 36% of our volunteers came from local churches against 48% in the prior year.

All volunteers visit their clients for at least an hour a week. Some help out with practical tasks, such as small DIY tasks, window cleaning and gardening, others escort their clients out in their wheelchairs. In an average week, our volunteers make over 80 visits to clients, and the total number of clients we served in the year April 2010 to March 2011 was 296 against 279 in the prior year.

How are we different?

SCC is a volunteer-dependent project and is continually recruiting volunteers to meet the demand for befrienders.

We are not an exclusively Christian project and welcome volunteers from a variety of sources, and at year-end, 64% of our volunteers came from the wider local community against 52% in the prior year.

Staff and funding

This year we received approximately 65% of our funding from the London Borough of Southwark. The salaries of volunteer coordinators are raised from applications to various Trusts and Charities. We also receive donations from individuals and churches.

Project Manager's Report 2010- 2011

The year April 2010 to March 2011 was a challenging one to the staff team in many ways, keeping up the high standards in matching and supporting our befriending matches without a full staff team, periods of staff vacancy and the underlying funding available from Trusts.

Over the year we provided a service to 296 clients of which 198 were befriending matches where a volunteer visited an older person in their own home for an average of one hour every week. These volunteers are provided with support and supervision by two coordinators, who also facilitate the matching process.

We received a total of 81 new referrals during the year with a noticeable increase of enquiries from social workers and care managers making referrals for clients who they will no longer be working with as they do not meet the criteria for services following a re-assessment of their needs.

Fortunately we have had a good year in attracting volunteers with 35 new volunteers recruited to help with new and existing clients. We ended the year with a total of 96 volunteers. Throughout the year we had 38 volunteers leave us.

Our social group based in SE15, working with St Mary's Church has continued to meet every week with a change of programme over the summer with escorted trips allowing all of those who attended the rare opportunity to get out with support from volunteers going on outings including Alexandra Palace for lunch, Nine Mile in Kent for lunch and a visit to the theatre. A survey was taken with the users and they decided that they would prefer to have their chair based exercises on alternate weeks, doing activities such as glass painting, flower arranging, board and card games as they want to have time to chat with each other.

Our Camberwell group moved premises in January 2011 to Brandon Baptist Church where our offices are based. Our thanks and appreciation are extended to Sue Stone from the Well Community Church whose passion to support the group helped to start the group and were our hosts since September 2009.

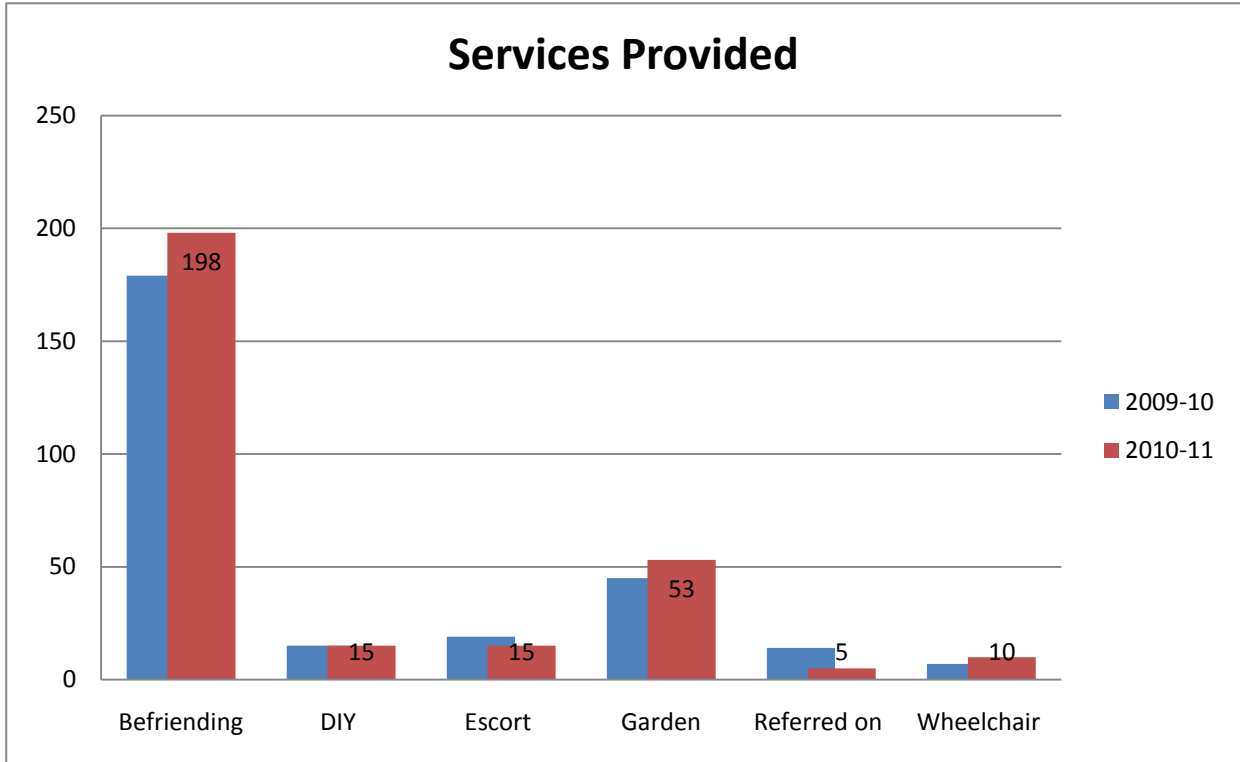
As with last year the changes that the introduction of Personalisation will bring and the inevitable changes in funding from Southwark council are still unclear to us. We have ensured that we are kept in the loop attending meetings and forums organised by Southwark and understand the need to look at how we deliver our service and that there are inevitable changes to come in the way we work with the full introduction of personalisation. Change is needed and will be a vital consideration in any future monies we may apply to from Southwark council. Trustees and staff will be working together to look at the possibilities in the year to come.

Thank you to all our volunteers for the time you give selflessly to visit isolated. Lonely and housebound older people in our community.

Marcia Green
Project Manager

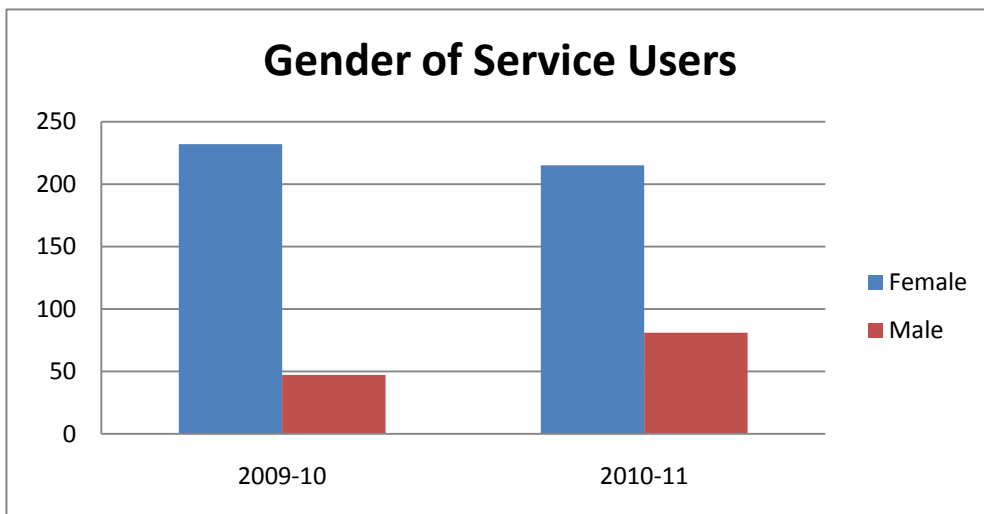
Our Services

Total number of service users we were able to provide with a service was higher than 2009/10, though staff costs barely rose, and this was achieved as additional efforts were made by our staff. It is understood that this amount of pressure on staff cannot be sustained indefinitely and in this respect the board intend to hire additional staff in the year 2011/12.

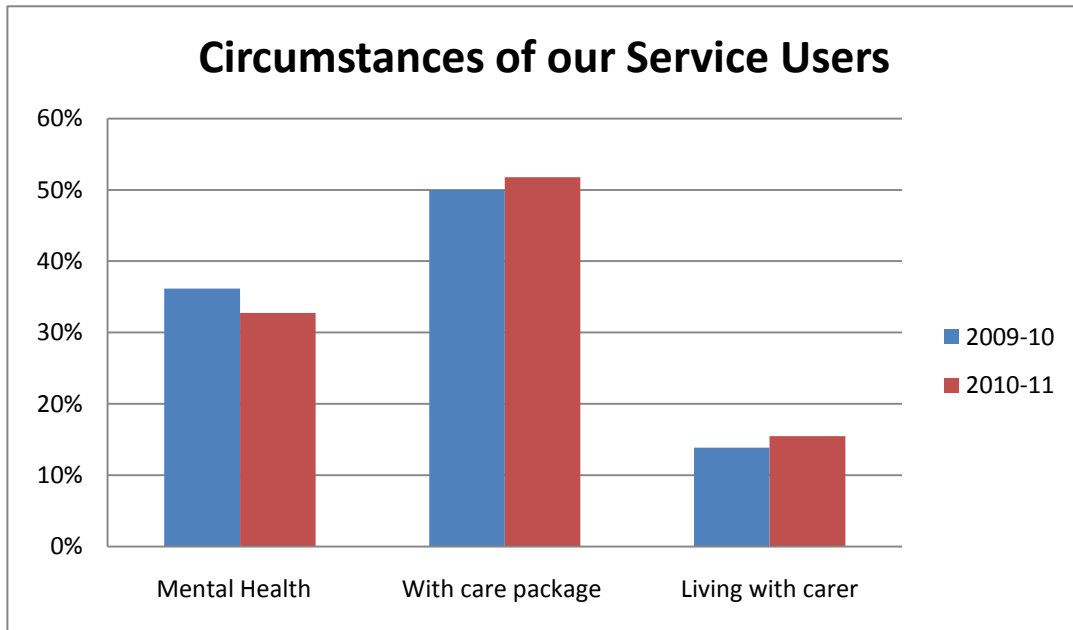


Profile of Our Users

- 198 befriending matches were supported
- 73% of service users were female
- 52% had a care package from Southwark health & Social Care
- 38% were older than 85
- 31% were referred with identified mental health issues including dementia, Alzheimer's disease, depression and schizophrenia
- 44% of our users lived in SE15
- 2% of referrals were referred onto other agencies

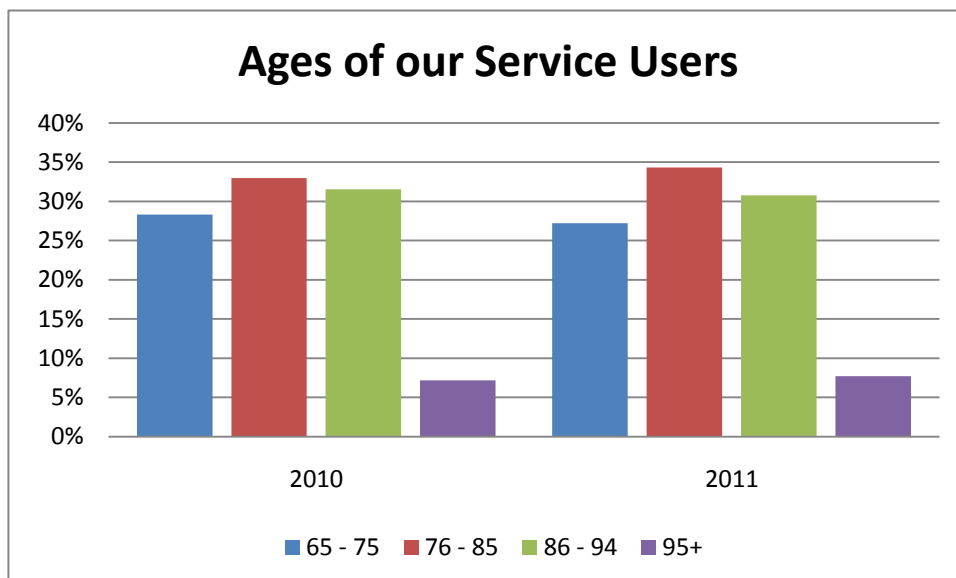


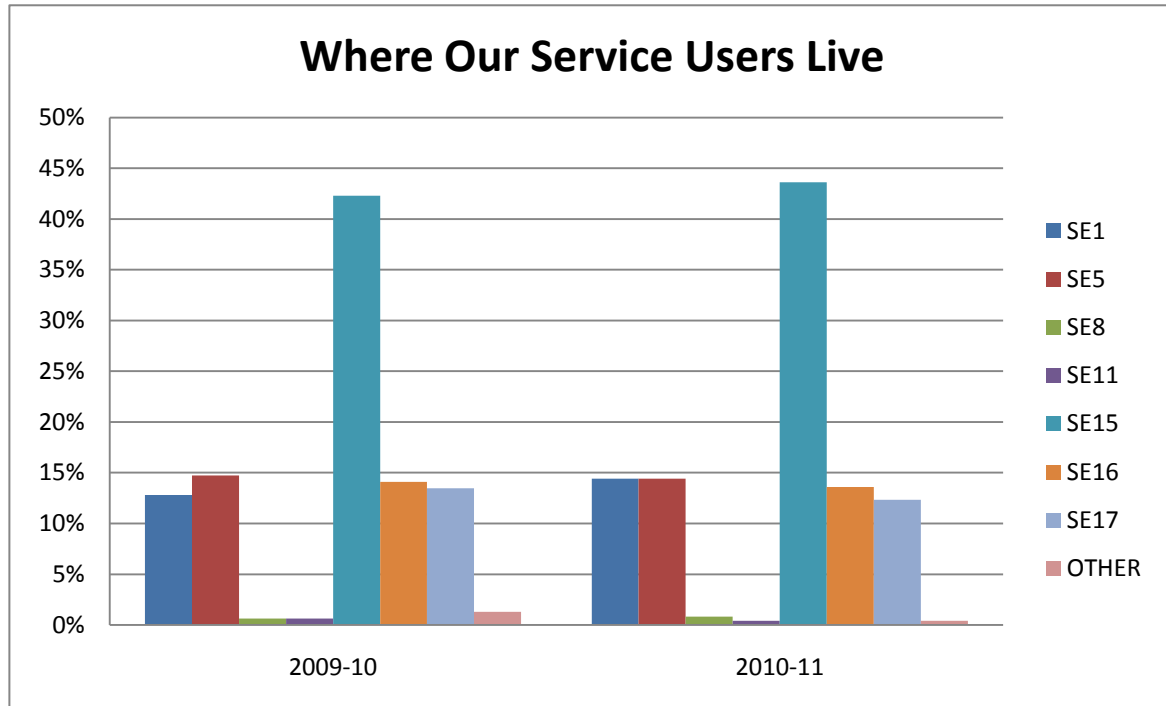
We have seen a substantial increase in the number of male service users, being 17% last year to 27% this year.



The personal situations of our service users mean that some come within more than one of the categories for mental health, living with a carer or have a care package.

Our referrals come from individuals, statutory and voluntary sources. Southwark Health & Social Care is a combined service, although our statistics record them separately. Referrals from for example a hospital social worker is recorded as a NHS referral as are referrals from Community Mental Health Teams (CMHT), physiotherapists and G.P's.





Each year we have a number of repeat referrals from individuals for services such as gardening and window cleaning. The majority of annual repeat requests do not have a volunteer befriender. Some existing service users who have volunteer bendifenders may also request an additional service such as gardening, window cleaning or small DIY job

Our Volunteers

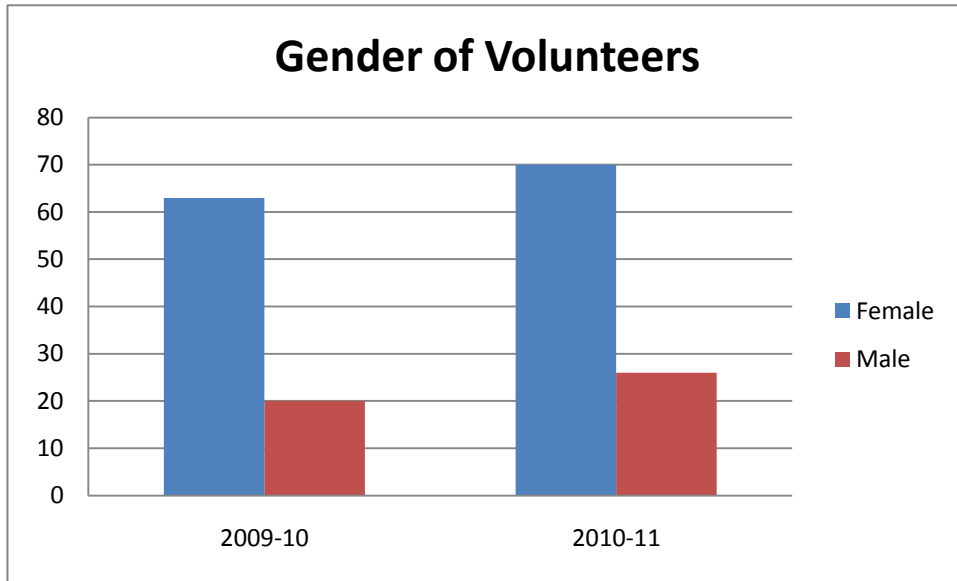
Our volunteers are at the heart of our organisations as *they* directly carry out our services which include

- visits to isolated, housebound and lonely older people in our community
- help with keeping gardens tidy
- window cleaning
- small DIY tasks
- escorting to social activities
- enable independence for people to do their own shopping or collect their pensions.

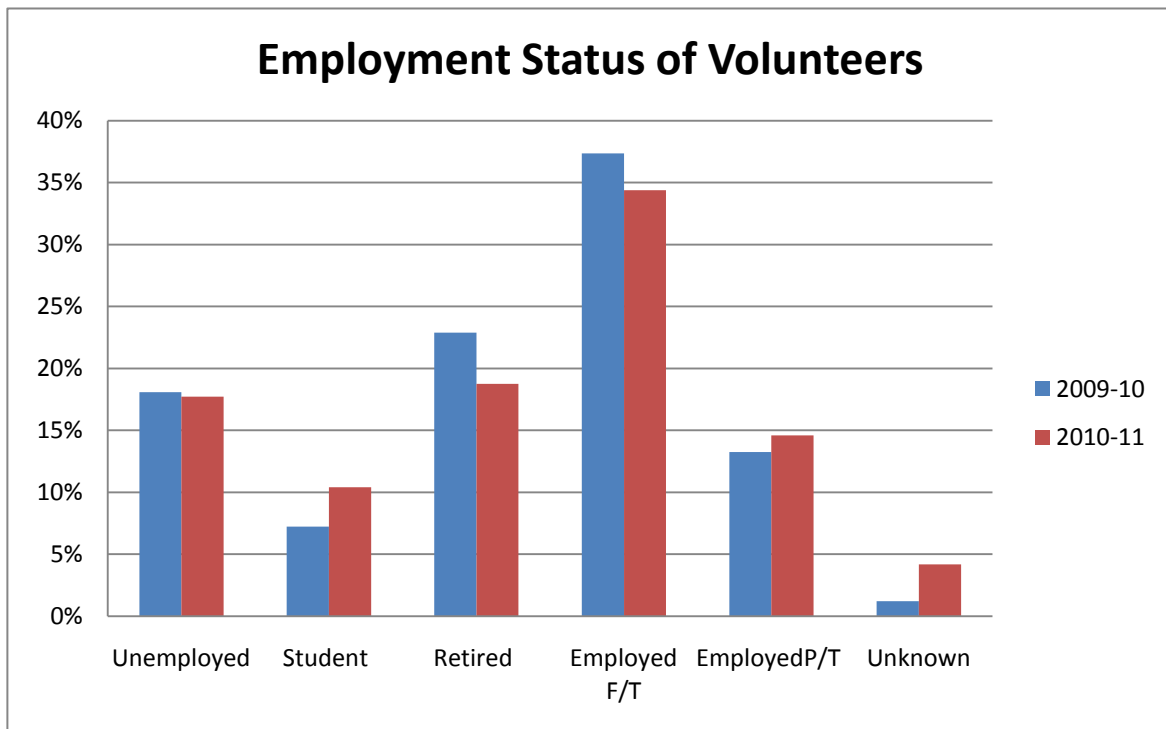
The one activity for which staff take full responsibility is managing and attending the two social befriending groups.

Funding for the organisation enables paid staff to provide training for volunteers, a safe environment for volunteers to give their time and provide advice and information on good practice in volunteering including boundaries, support and supervision.

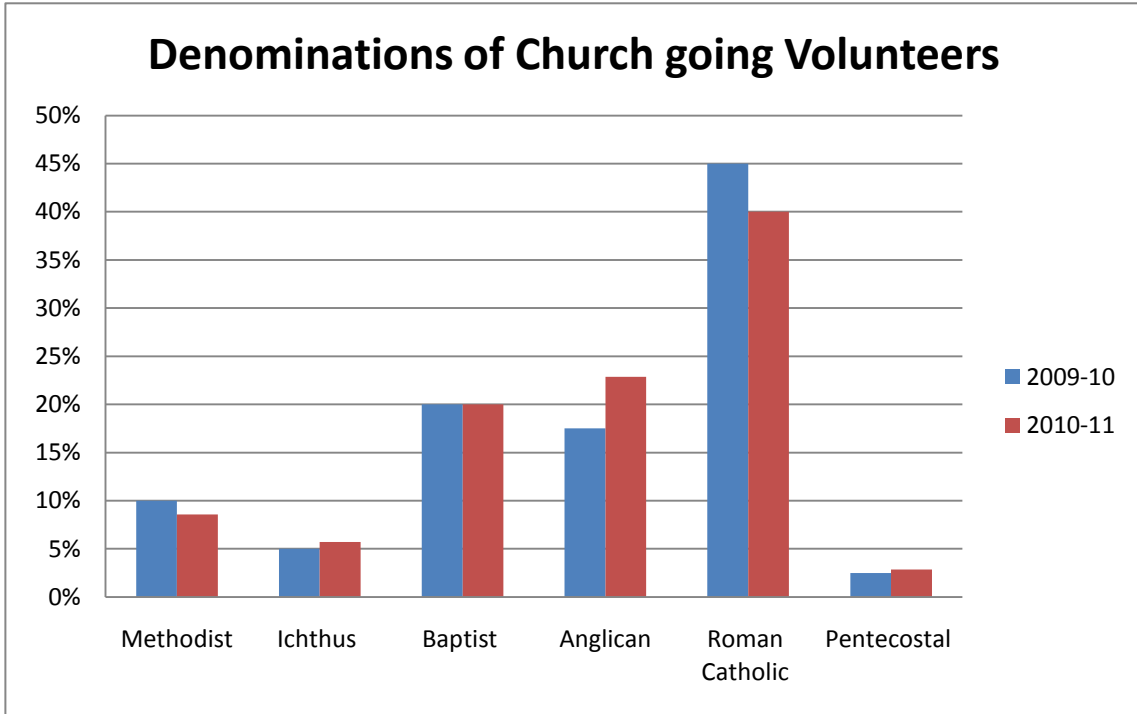
Staff also assist service users who are or have carers with information on other services, support groups and issues with paid carers. Staff also follow up reports from volunteers on no answer when they carry out a visit, alert social services of any concerns that may arise with the knowledge of the service user, make referrals to other agencies where necessary.



At the end of March 2011 we had 96 active volunteers, plus an additional 3 taking a break due to the loss of their client. There were 21 volunteers awaiting induction CRB checks or references.

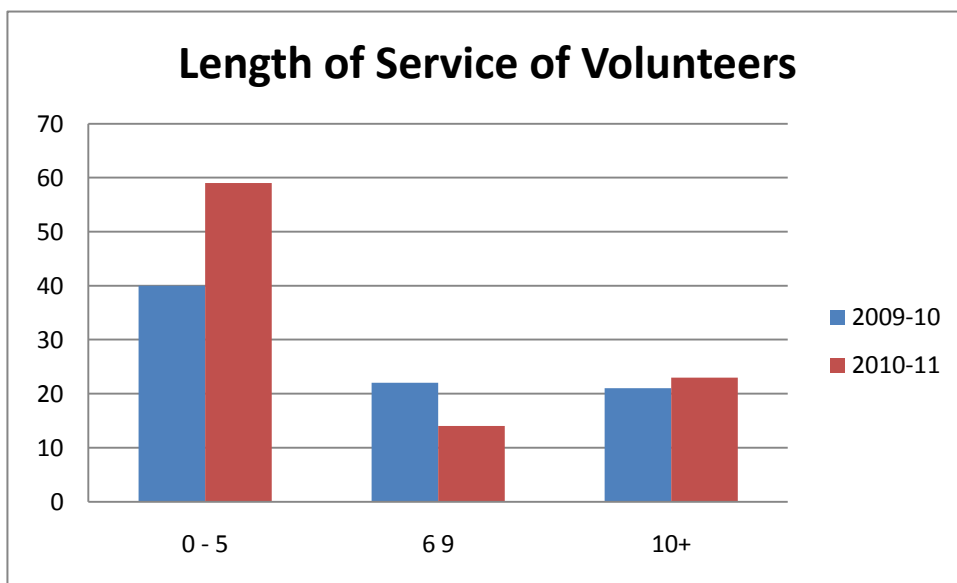


Denomination of Church-going Volunteers



Our Volunteers - Staying with us

Southwark Churches Care has a special relationship with our volunteers which is reflected by the length of time that volunteers stay with us. We feel the way that we work with our volunteers and the training we provide is a part of that success. Of our 96 current volunteers, 39% have been with us for 6 years or more.



Acknowledgements

Thank you to all the organisations and individuals we have worked with over the past year who have helped to support and develop our work.

Southwark Volunteer Centre Management Forum providing invaluable training for staff.

Sue Stone at the Well Community Church – helping to set up and host our Camberwell social group.

The Modernisation Unit Guy's and St Thomas hospitals End of Life initiative working with us to train volunteers to befriend people at the end of their life.

Brenda Bond Chief Executive Age Concern Lewisham and Southwark - recommending SCC to the Modernisation Unit at Guy's & St Thomas.

Kim Connell manager Age Concern Lambeth working with SCC to set up training for End of Life initiative.

Jemma Hough Alzheimer's Society Southwark and Jacky Bourke-White Age Concern Lewisham and Southwark - initiating meetings of voluntary sector providers to present a voluntary sector approach to the changes in funding.

R. Francis A & J Aftercare - transport for our social group in Peckham

Volunteers: Angela Johnston, Brian Sanders, Angela Semena, Judith Tomey for their help over the summer as escorts and wheelchair pushers that enabled some of our clients to enjoy the summer trips.

Paul Keen, Becks Lambourne, Angela Johnston for manning a stall at the City of London Volunteers fair.

Diane Sobers - volunteer administrator

Abigail Anfam who carried out interviews with clients to be used in future publications

Revd Ben King of Kings College Hospital Pastoral care team

Canon Revd Giles Goddard and Keith Robinson of St John's Church Waterloo

The Public Law Company who sponsored and hosted a Christmas Tea for our clients and volunteers: Keely Patmore responsible for organising the event and volunteers Roy Godfery, Lucy Healy, Scott Eaton, Nick Jenner, David Adlam, Nia Foley, Marie-Claire Priestly, Sharon Brace, Sue Hollingdale, Kimberley Allan

Iain Dunn sheltered scheme Manager of Carey Court - hosts of our Carol service

The members of the group previously known as Older Peoples Forum for their support and efforts to keep the voice and services of the voluntary sector alive for older people in the borough.

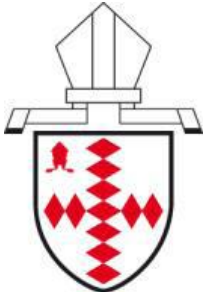
Ben McKeown – updating our website

Beth Jirtle – Befriending coordinator October 2010 to April 2011

Mary Dorey and Dorothy Watkins for their work with residents at King Charles Court

A very big thank you to our financial sponsors in 2010 – 2011

The Bishop of Southwark, The Woolwich Mission and the entire Diocese of Southwark



The Diocese of
Southwark



Lloyds TSB Foundation
for England and Wales



MERCHANT TAYLORS' COMPANY



Financial review

At current levels of expenditure, SCC has enough reserves to fund the programme for around twelve months. The Board of Trustees are actively fund-raising and hope to increase these reserves. We have recently had confirmation that Southwark Council will maintain their grant to the charity at the same level for the year 2011/12.

In the opinion of the Board of Trustees the reserves of the charity, currently amounting to £48,022 are needed to fund the ongoing objectives of the charity. The Trustees confirm that the charity's assets are readily available and in the opinion of the Trustees adequate to fulfil the obligations of the charity.

Investments selection

The charity's reserves are held in bank accounts.

Risk

Due to the nature of the Trust's expenditure and management of reserves, the trustees do not consider risk to be an element in the presentation of this report. Projects are not primarily capital in nature and investments are held in two Community Accounts with CAF Bank Ltd and with COIF Investment Management Ltd.

Reserves

It is the policy of the Board of Trustees to maintain reserves in the Charity at a level to enable it to be administered efficiently, to meet its short-term expenditure requirements and to have adequate resources to fund its charitable objectives. In establishing this policy the Board of Trustees have considered the disposition of its incoming resources which are mainly derived from other charities. The level of reserves is subject to periodic review when considering changes to the charity's activities and requirements.

Responsibilities of the Management Committee

Company law requires the Management Committee, being the Board of Trustees and the Project Manager, to prepare financial statements for each financial year which give a true and fair view of the state of the affairs of the charitable company as at the balance sheet date and of its incoming resources and application of resources, including income and expenditure, for the financial year. In preparing those financial statements, the Management Committee should follow best practice and:

- select suitable accounting policies and then apply them consistently;
- make judgements and estimates that are reasonable and prudent; and
- prepare the financial statements on the going concern basis unless it is inappropriate to assume that the company will continue on that basis.

The Management Committee is responsible for maintaining proper accounting records which disclose with reasonable accuracy at any time the financial position of the charitable company and to enable them to ensure that the financial statements comply with the Companies Act 2006. The Management Committee is also responsible for safeguarding the assets of the charitable company and hence for taking reasonable steps for the prevention and detection of fraud and other irregularities.

Auditors

Under Section 477 of the Companies Act 2006, the company is not required to appoint auditors.

Signature and declaration

I declare, in my capacity of charity trustee, that:

- the Board of Trustees have approved the report above and have authorised me to sign it on their behalf.

Adrian Greenwood

Position: Chair

Date: 7th July 2011

Statement of Financial Activities for the Year Ended 31 March 2011

	Notes	Unrestricted Funds	Restricted Funds	Total	Year ended 31-Mar-10
Incoming resources:					
Grants received -					
London Borough of Southwark	1	42,275	17,391	59,666	59,818
LTSB Foundation	1		5,000	5,000	5,000
Merchant Taylors' Company	1		6,000	6,000	0
Diocese of Southwark - Woolwich	1		3,000	3,000	0
Bishop of Soutwark's Lent Call	1	2,500		2,500	0
Church Community Fund	1		2,000	2,000	
Wakefield Trust	1			0	8,000
Vintners' Gift Charity	1			0	5,000
		<u>44,775</u>	<u>33,391</u>	<u>78,166</u>	<u>77,818</u>
Donations received		794	0	794	2,312
Gifts in Kind	1	12,000	0	12,000	*
Investment income -					
Interest received on bank deposits		162	0	162	292
		<u>162</u>	<u>0</u>	<u>162</u>	<u>292</u>
Total incoming resources		<u>£57,731</u>	<u>£33,391</u>	<u>£91,122</u>	<u>£80,422</u>
Charitable expenditure:					
Costs of activities in furtherance of the charitable objectives -					
Rent of office premises		3,768		3,768	3,741
Accountancy and payroll services	1	12,000		12,000	*
Staff costs	2	28,760	30,391	59,151	63,180
Volunteers' expenses (including catering)		390		390	2,491
Group Work		2,105	3,000	5,105	*
Training costs		71		71	0
Insurances		1,374		1,374	1,376
Telephone & Broadband		1,924		1,924	1,940
Printing, postage and stationery		2,889		2,889	1,819
Annual review meeting expenses		943		943	992
Sundry expenses		2,847		2,847	2,405
Depreciation of fixed assets	3	357		357	820
		<u>3,768</u>	<u>30,391</u>	<u>3,768</u>	<u>3,741</u>
		<u>12,000</u>	<u>30,391</u>	<u>12,000</u>	<u>*</u>
		<u>28,760</u>	<u>30,391</u>	<u>59,151</u>	<u>63,180</u>
		<u>390</u>	<u>3,000</u>	<u>390</u>	<u>2,491</u>
		<u>2,105</u>	<u>3,000</u>	<u>5,105</u>	<u>*</u>
		<u>71</u>	<u>3,000</u>	<u>71</u>	<u>0</u>
		<u>1,374</u>	<u>3,000</u>	<u>1,374</u>	<u>1,376</u>
		<u>1,924</u>	<u>3,000</u>	<u>1,924</u>	<u>1,940</u>
		<u>2,889</u>	<u>3,000</u>	<u>2,889</u>	<u>1,819</u>
		<u>943</u>	<u>3,000</u>	<u>943</u>	<u>992</u>
		<u>2,847</u>	<u>3,000</u>	<u>2,847</u>	<u>2,405</u>
		<u>357</u>	<u>3,000</u>	<u>357</u>	<u>820</u>
Total charitable expenditure		<u>£57,429</u>	<u>£33,391</u>	<u>£90,820</u>	<u>£78,765</u>

* as a result of the Board of Trustees' decision to recognise Gifts in Kind of professional services and requirements under restricted funding, two lines – Accountancy and payroll and Group Work – have been added to this year's report. No prior year comparatives have been provided nor any prior year restatement deemed necessary. Accountancy services and group work had they been accounted for would have been broadly in-line with the current year's figures.

	Unrestricted Funds	Restricted Funds	Total	Year ended 31-Mar-10
Net incoming resources and movement of funds in the year	302	0	302	1,658
Total funds at 1 April 2010	47,457	263	47,720	46,062
Total funds at 31 March 2011	<u>£47,759</u>	<u>£263</u>	<u>£48,022</u>	<u>£47,720</u>

There is no difference between the net incoming resources stated above, and their historical cost equivalent.

All of the above activities relate to continuing operations of the Charity.

The Charity has no recognised gains and losses other than the surplus above, and therefore no separate statement of total recognised gains and losses has been presented.

Balance Sheet as at 31 March 2011

	Notes	31 March 2011	31 March 2010
Fixed assets			
Computer equipment	3	1,072	0
Current assets			
Cash at bank		41,498	49,858
Cash in hand		55	0
Debtors	1	9,299	2,204
		50,852	52,062
Less: Current liabilities			
Creditors falling due within one year	1	3,903	4,343
Grants received in advance	1	0	0
		3,903	4,343
Net current assets		46,949	47,720
Net assets		£48,022	£47,720
Funds			
Unrestricted funds			
General fund		47,759	47,457
Restricted funds			
	1	263	263
		£48,022	£47,720

For the Year Ended 31 March 2011 the company was entitled to exemption from audit under section 477 of the Companies Act 2006. No members have required the company to obtain an audit of its accounts for the year in question in accordance with Section 476 of the Companies Act 2006. The directors acknowledge their responsibility for complying with the Act with respect to accounting records and for the preparation of accounts including:

- i) Ensuring the company keeps accounting records; and
- ii) Preparing accounts which give a true and fair view of the state of affairs of the company as at the end of 31 March 2011 and of its profit for the financial year, and which otherwise comply with the requirements of the Companies Act relating to accounts so far as applicable to the company.

The financial statements were approved by the Board of Trustees on 7th July 2011 and signed on their behalf.

Adrian Greenwood
Position: Chair

1. Accounting Policies

Basis of preparation

The financial statements have been prepared in accordance with applicable Accounting Standards in the United Kingdom, the Accounting Regulations issued under the Charities Act 1993 and the Statement of Recommended Practice (SORP) 'Accounting and Reporting by Charities' published in March 2005. The analysis of income and expenditure has been restated accordingly.

The accounting policies that the Charity has adopted to determine the amounts included in respect of material items shown in the balance sheet and also to determine the income and expenditure have been applied consistently, with the exception of the adoption of SORP 2005, and are shown below.

Southwark Churches Care is not registered for Value Added Tax and does not reclaim VAT. Unrecoverable VAT is applied to the cost from which it arises.

Fund Accounting

Unrestricted funds are available for use at the discretion of the Trustees in furtherance of the charitable objectives of Southwark Churches Care.

Grants received from the LTSB Foundation, the Merchant Taylors' Company, the Church Community Fund and £17,391 from London Borough of Southwark are contributions towards the costs of Volunteer Co-ordination work including work with the Camberwell group (see also note 2). The grant received from the Diocese of Southwark – Woolwich Area mission is for transport costs associated with the Lime Tree House social group.

The Welfare Fund relates to monies received for the purpose of assisting to meet urgent financial needs of clients. There have been no transactions in this fund during the year, which showed a balance of £263 at 31 March 2010 and 31 March 2011.

Incoming resources

All incoming resources are accounted for on a receivables basis.

Resources expended

All expenditure has been accounted for on an accruals basis.

Gifts in Kind

Gifts in Kind were not accounted for in the prior year, but have been included in the current year. The Board of Trustees did not consider a restatement of the prior year financial statements to account for this change in policy necessary. It would be expected that the figure of £12,000 would have been applicable in the prior year if this policy had been in force.

These are recognised in the period in which they are received and expensed at the time of implementation. All gifts in kind in the current year relate to accountancy and payroll services provided by Christopher Young ACA to the charity through the period 1 April 2010 to 31 March 2011.

Fixed Assets

Costs of computer equipment is capitalised as incurred and is written-off over the expected useful life which is estimated at 4 years.

Debtors

In the current period consist of £6,000 of grant from the Merchant Taylor's Company received on 5th April 2011. The remaining £3,299 relates to repayment of transport costs paid on behalf of St Mary Magdalene Church, Peckham.

Creditors

The creditors are not considered immaterial and mostly relate to accruals for untaken leave, underpayment of London Weighting, and refunds due to Trustees for fixed asset purchases. No formal disclosure is thus made in the accounts.

2. Resources Expended

Staff Costs	Year ended 31-Mar-11	Year ended 31-Mar-10
Gross remuneration	53,514	58,265
Employer's National Insurance	5,272	4,616
Employer's Pension Contributions	0	0
Staff Recruitment Costs	365	299
Staff Travel Expenses	0	0
	<u>£59,151</u>	<u>£63,180</u>

At year-end, the charity has one full time member of staff and two part-time members of staff

3. Fixed assets

Cost

At 1 April 2010	0
Additions during the year	1,430
Cost of disposals in the year	0
At 31 March 2011	<u>£1,430</u>

Depreciation

At 1 April 2010	0
Provisions in the year	357
Cost of disposals in the year	0
At 31 March 2011	<u>£357</u>

Net Book Value

At 31 March 2011	<u>£1,072</u>
At 31 March 2010	<u>£0</u>

4. Trustees' Remuneration

Members of the Board of Trustees do not receive any remuneration for their services.